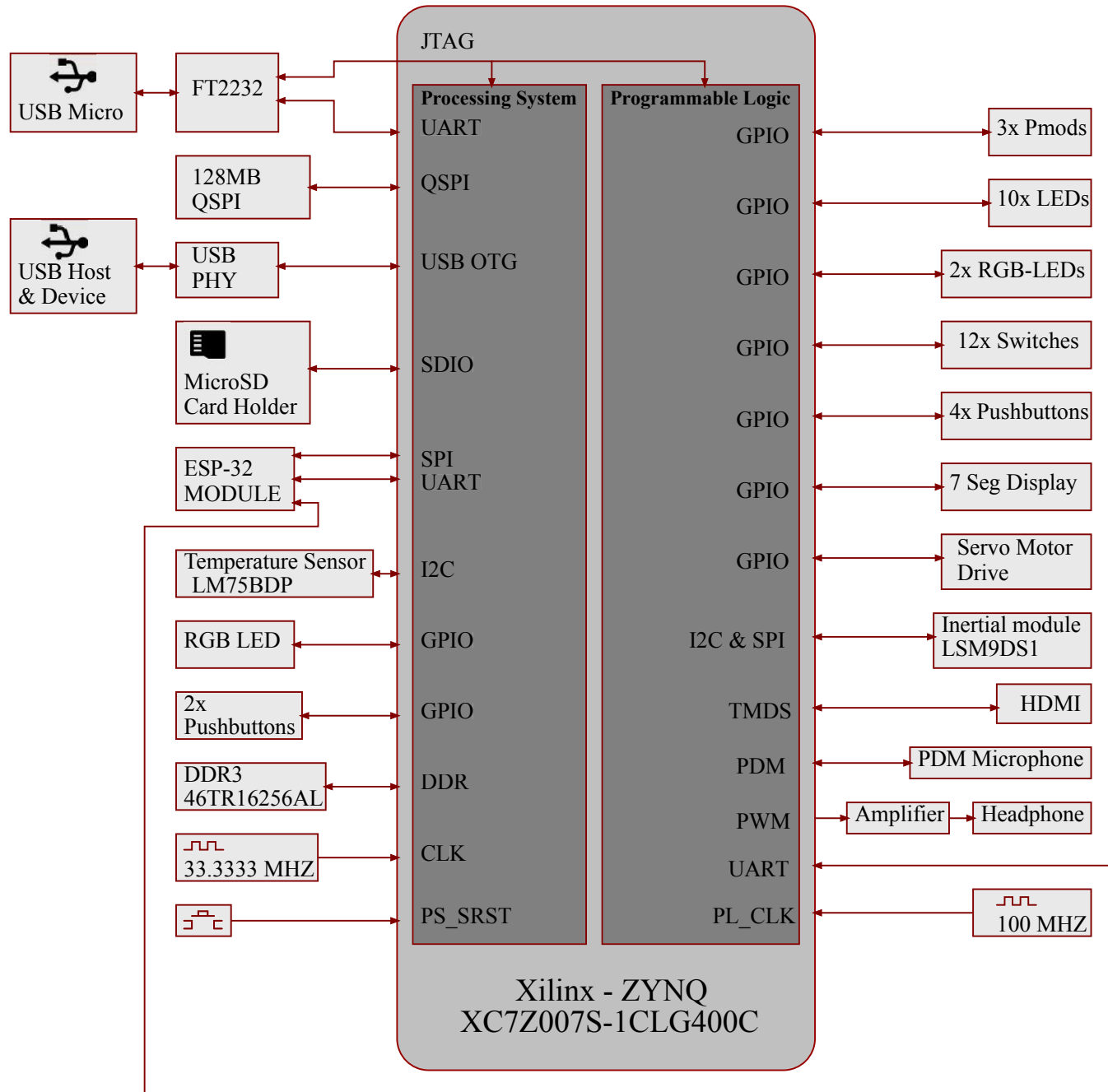


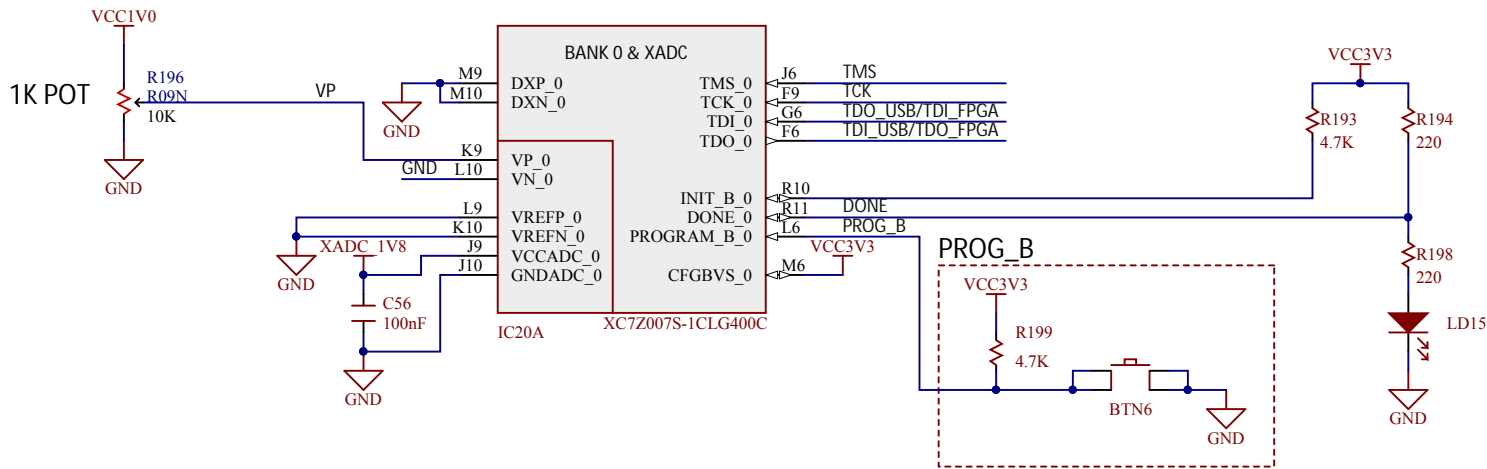
BlackBoard

1/15/2018 Rev. D

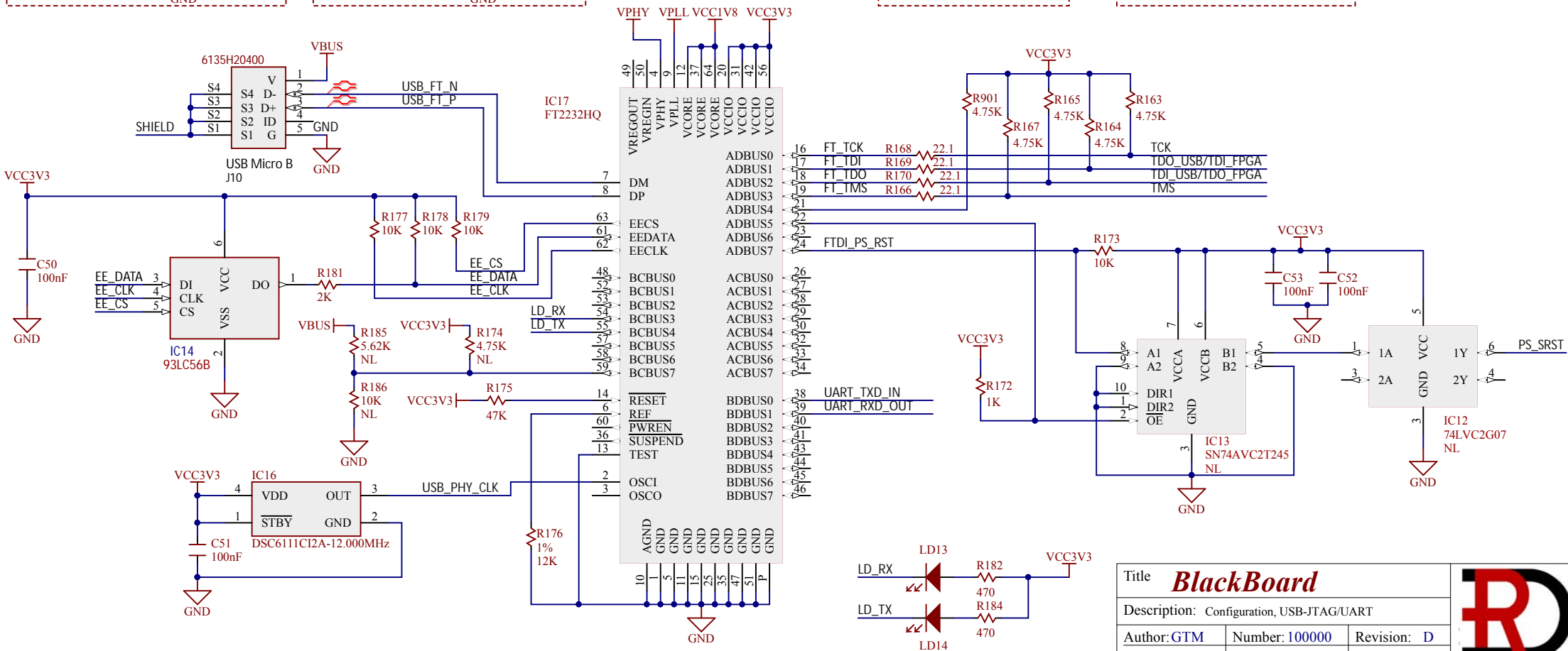
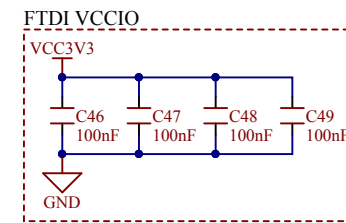
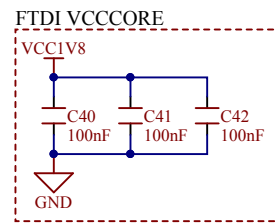
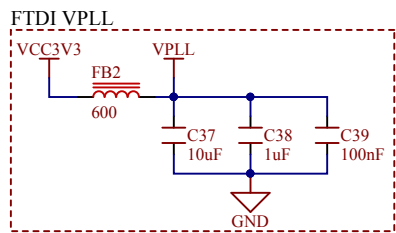
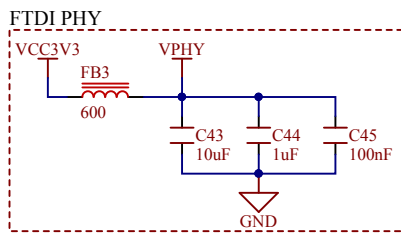


Page	Description
2.	Configuration, USB-JTAG/UART
3.	MIO500, MIO501, Boot Devices
4.	ESP-32 Module, USB PHY, PS Buttons PS RGB LED
5.	MIO502, DDR3
6.	PL Banks
7.	PL Buttons, PL Switches, PL RGB LEDs
8.	Headphone, Microphone, Temp sensor, Inertial module
9.	Pmods, 7 Segment Display, PL LEDs Servo Motor Drive
10.	HDMI Source
11.	FPGA Power
12.	Power supplies



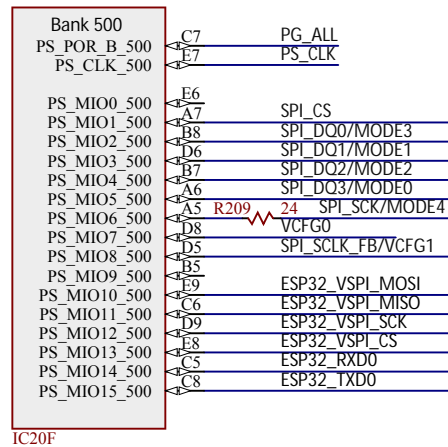
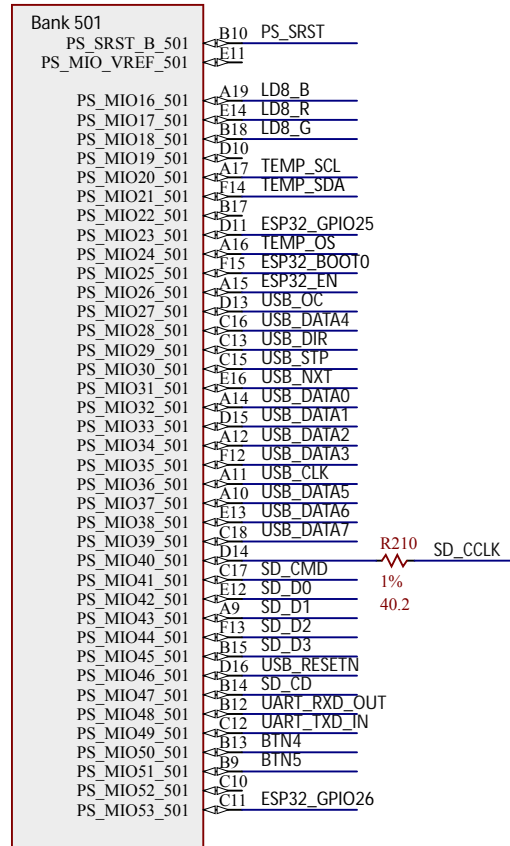


- Standoff
- STD1
- Standoff
- STD2
- Standoff
- STD3
- Standoff
- STD4
- Chinese ROHS
- ROHS
- CE

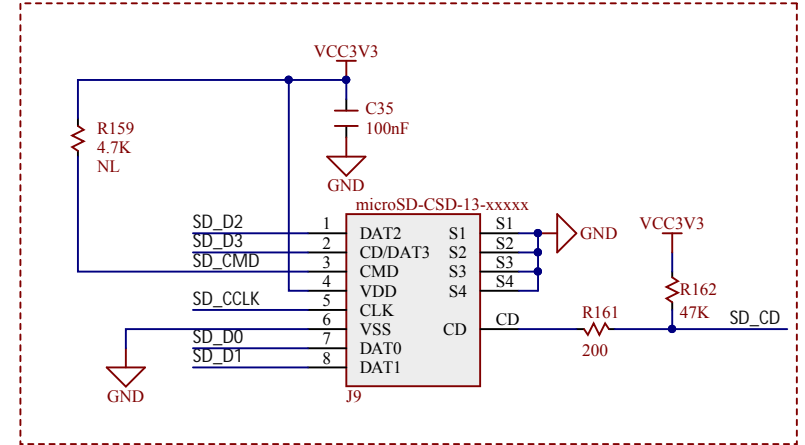


Title BlackBoard		
Description: Configuration, USB-JTAG/UART		
Author: GTM	Number: 100000	Revision: D
Date: 11/22/2018	Time: 8:07:42 PM	Page 2 of 12

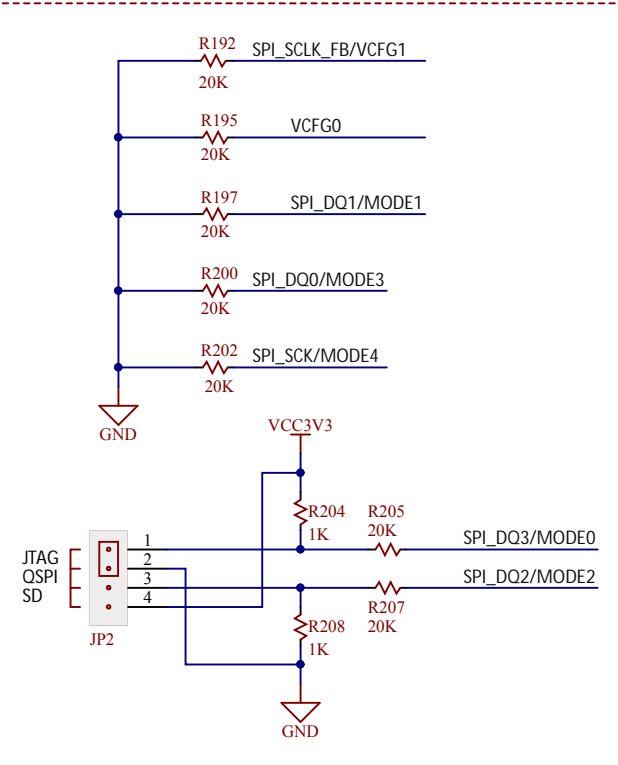




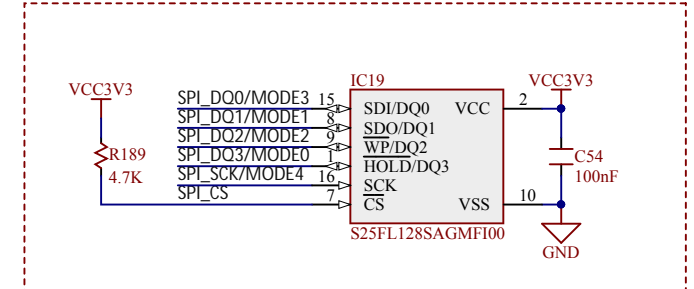
MICRO SD CARD



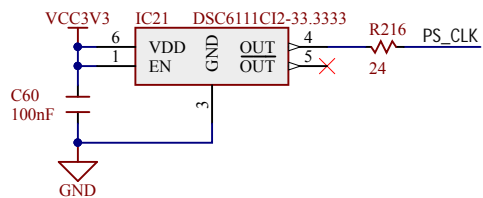
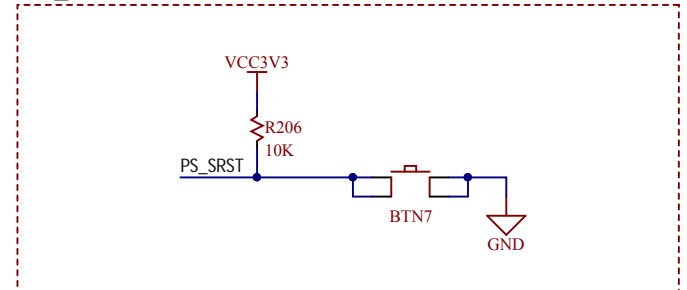
BOOT OPTIONS



QSPI FLASH

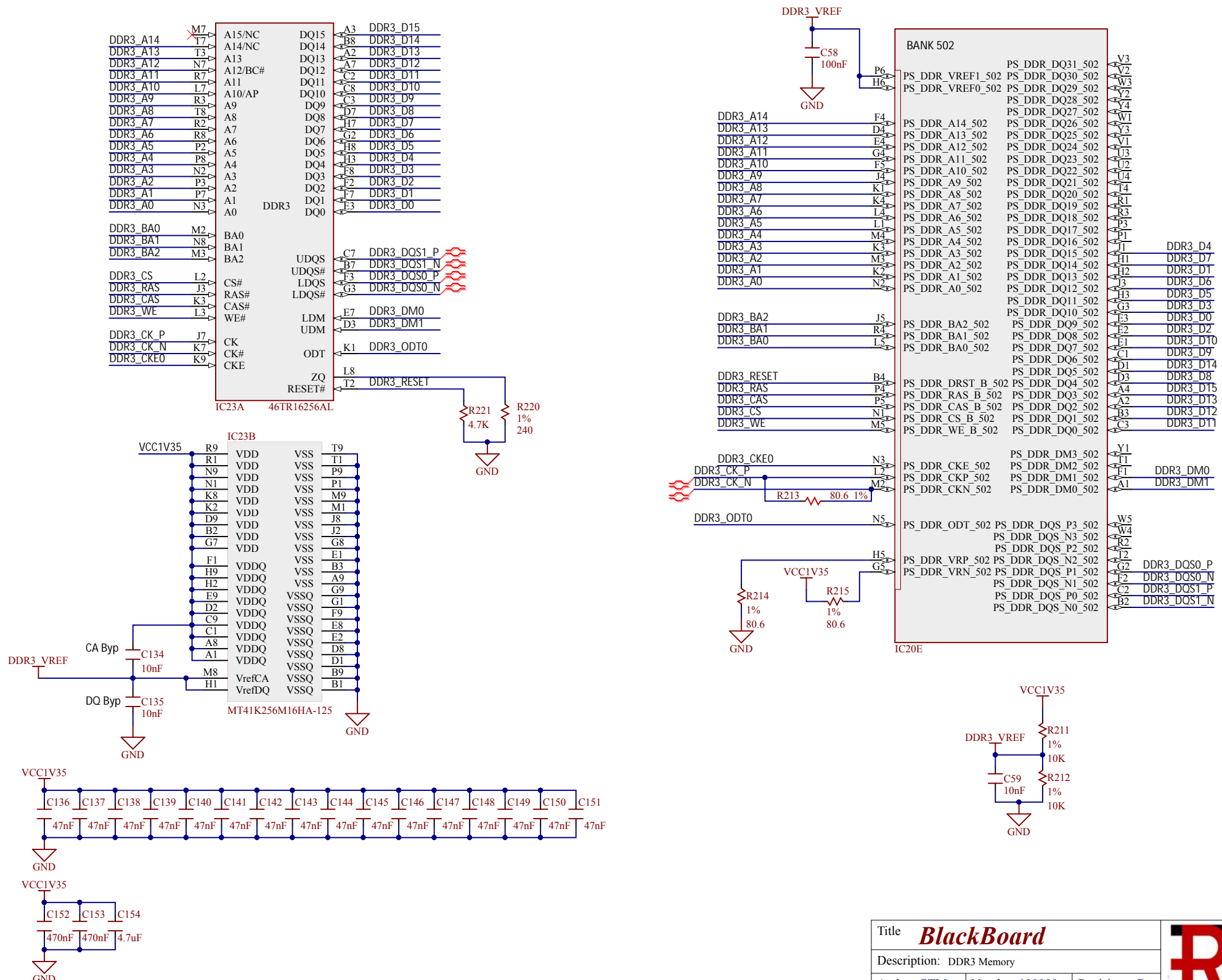


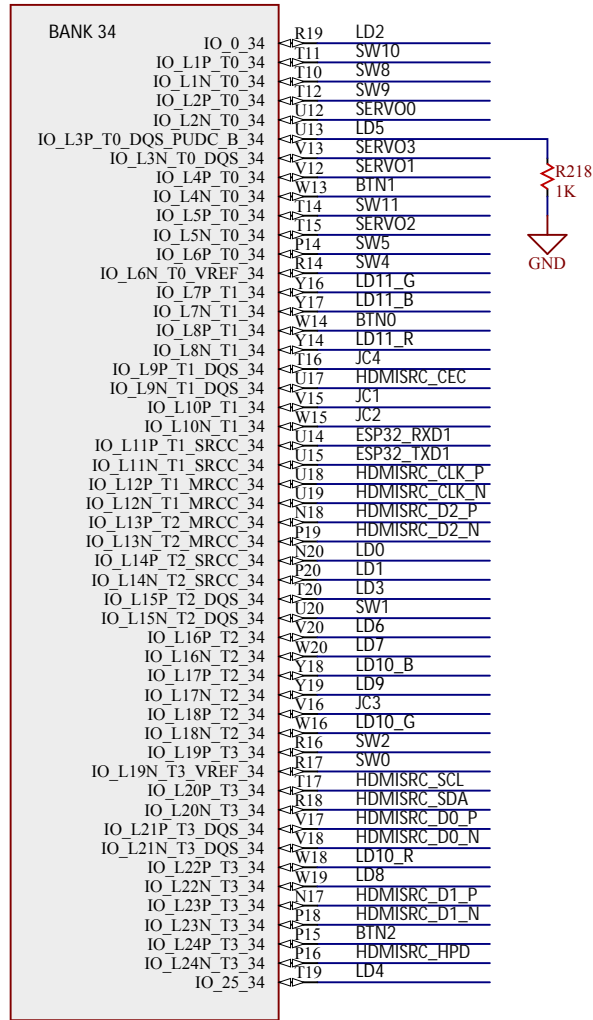
PS_SRST



Title BlackBoard		
Description: Boot Devices, Boot Options		
Author: GTM	Number: 100000	Revision: D
Date: 11/22/2018	Time: 8:07:43 PM	Page 3 of 12

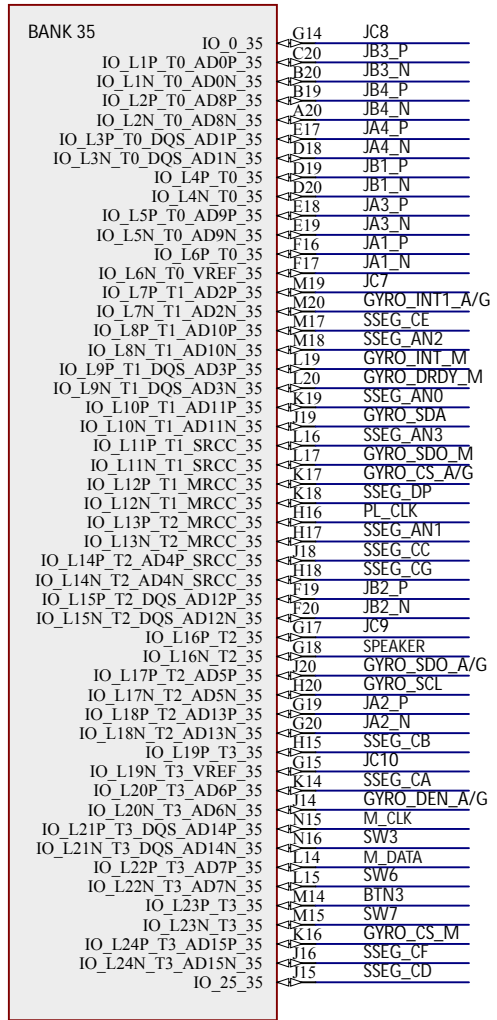






Bank34:

- HDMI
- LED[0:4]
- RGB LED[10:11]
- BTN[0,1,2]
- SW[0,1,2,4,5, 8, 9, 10, 11]
- PmodC
- Servo Motors Drive

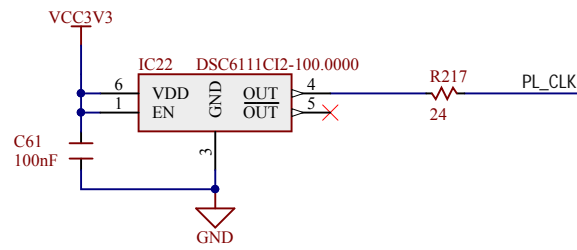


Bank35:

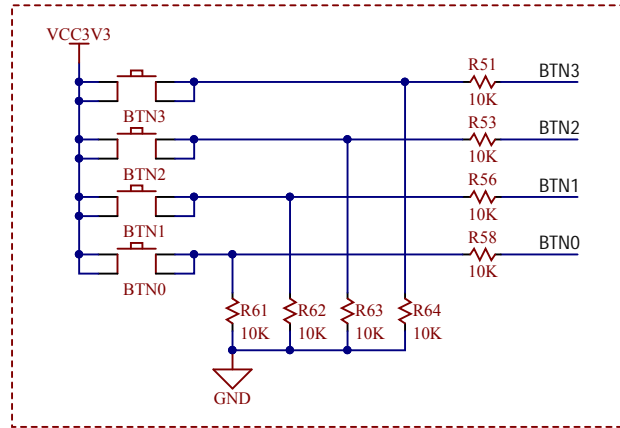
- PL_CLK
- PmodA
- PmodB
- PmodC
- Inertial Module
- Speaker
- PDM Microphone
- BTN[3]
- SW[3,6,7]
- 7 Segment Display

IC20C

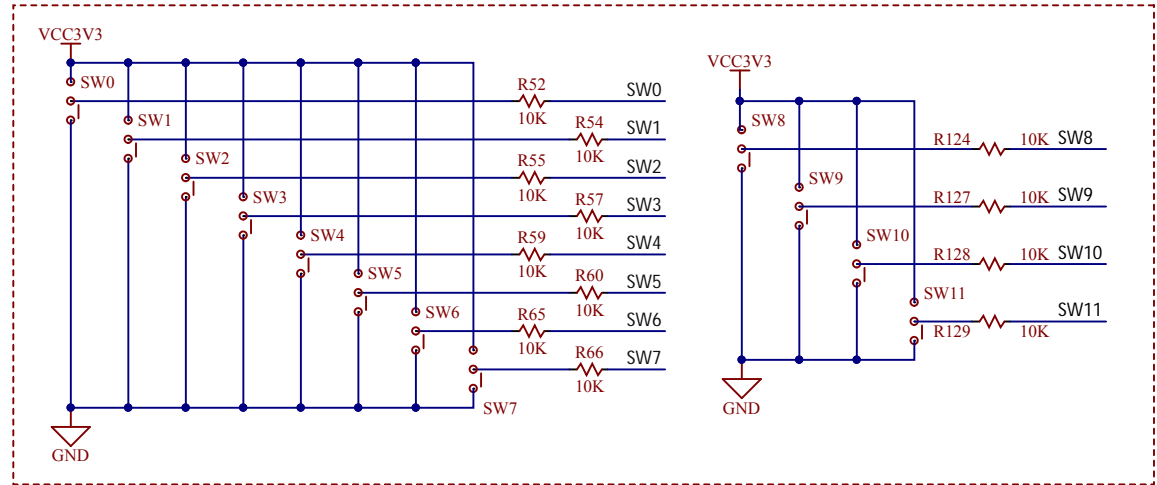
IC20D



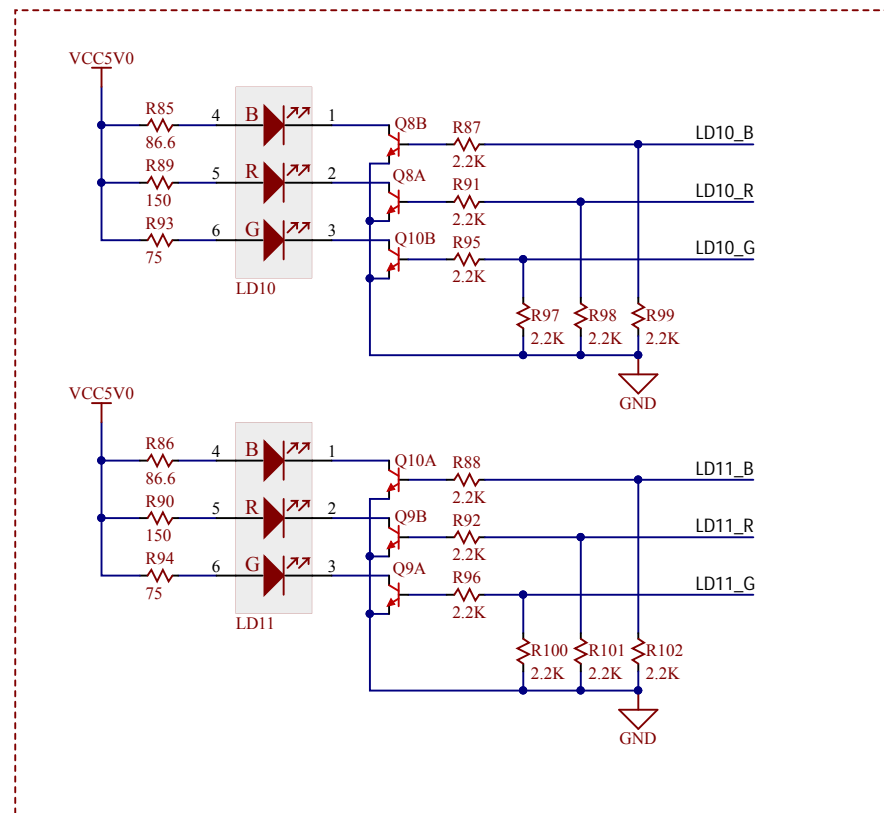
PL BUTTONS



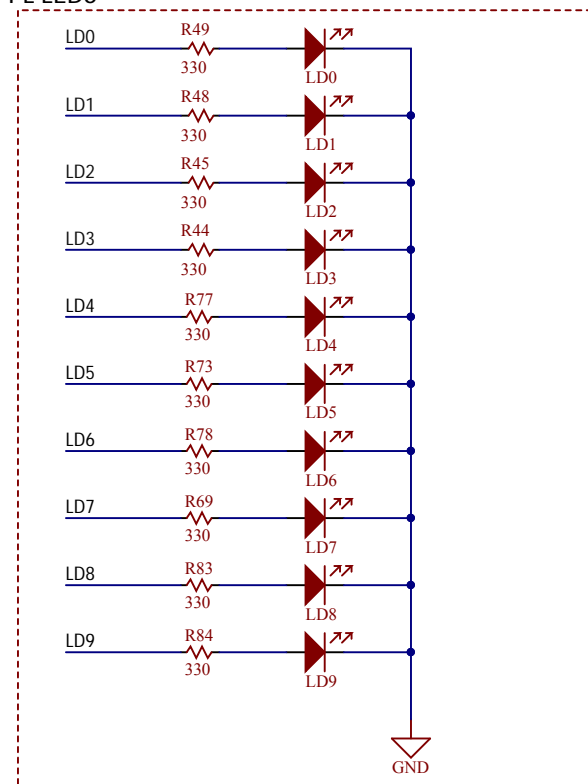
PL SWITCHES



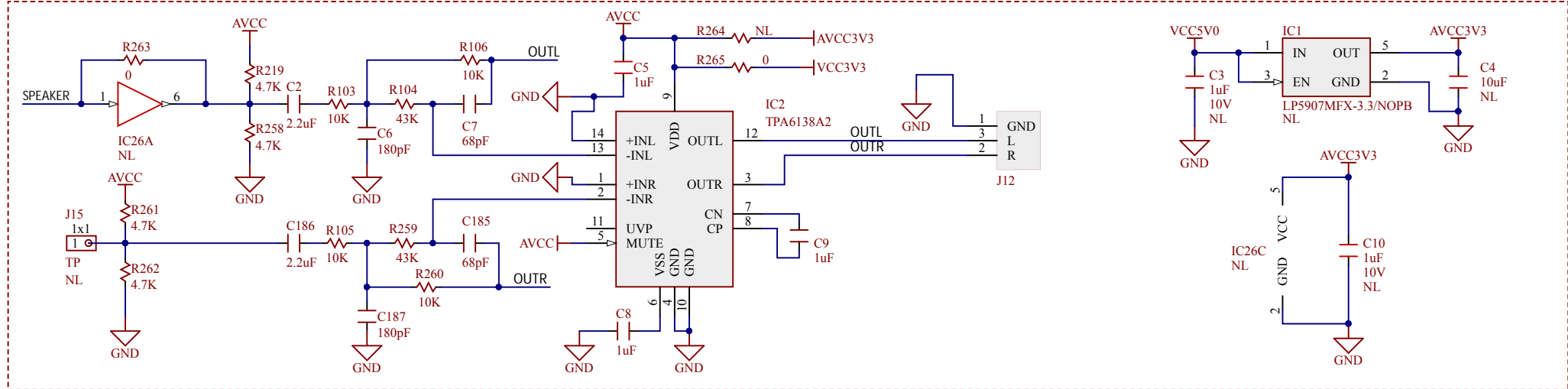
PL RGB LEADS



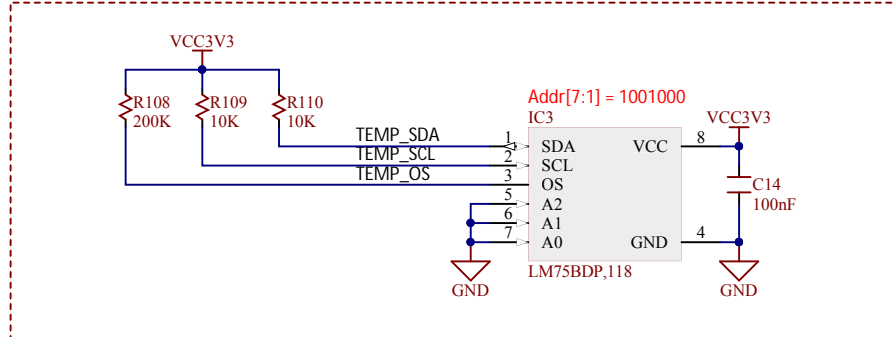
PL LEADS



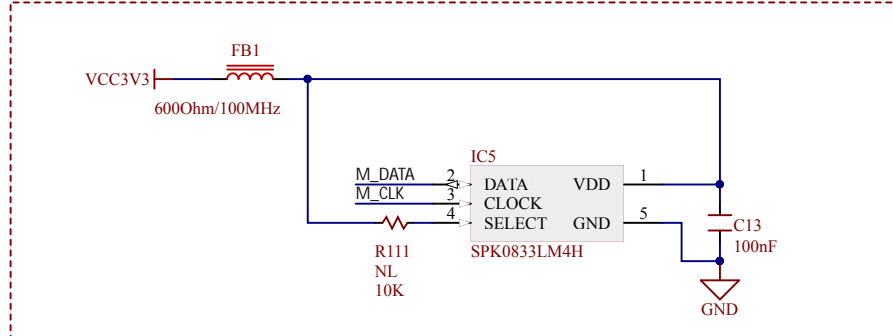
AUDIO



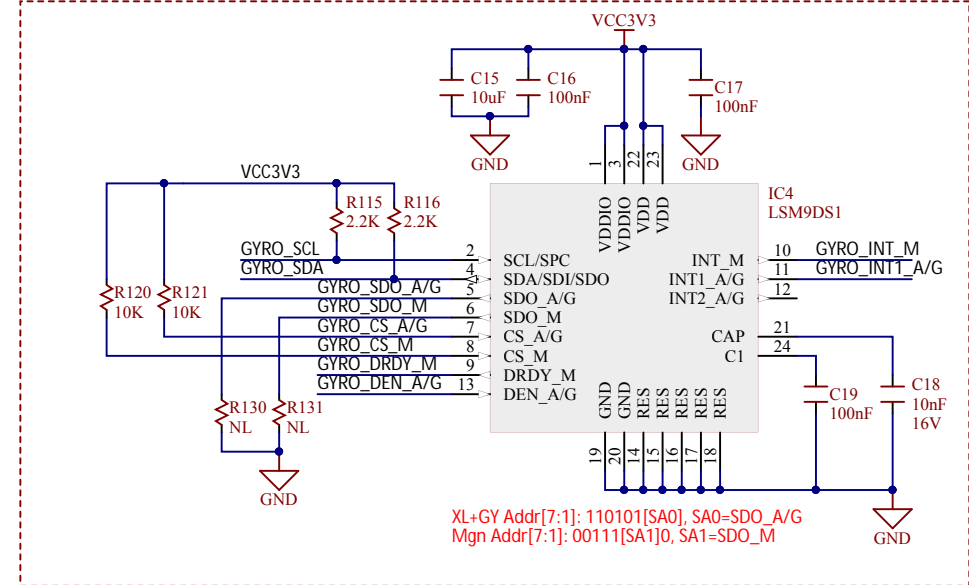
TEMPERATURE SENSOR



MICROPHONE



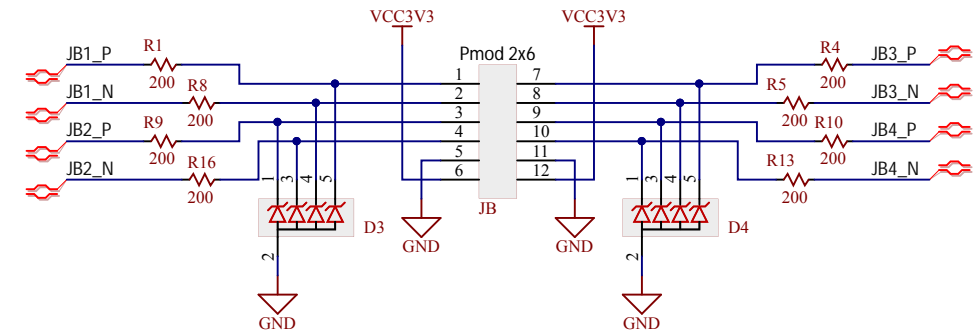
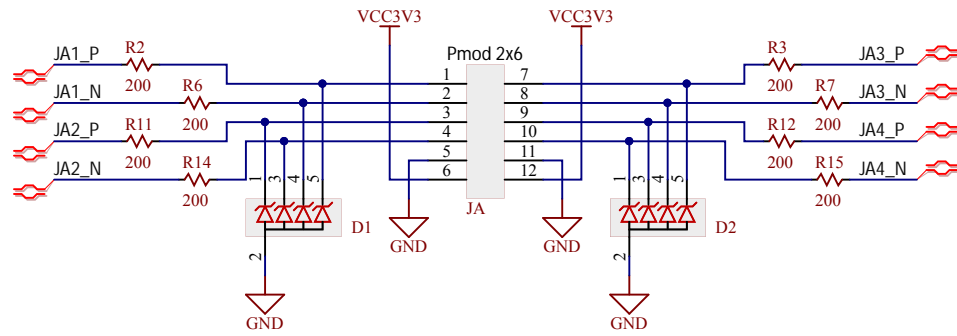
INERTIAL MODULE



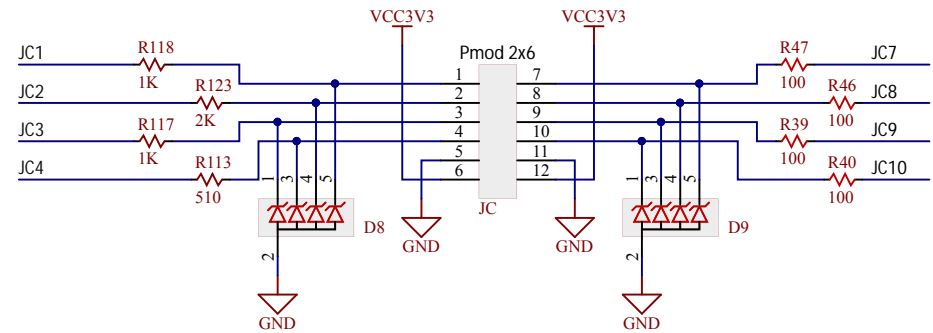
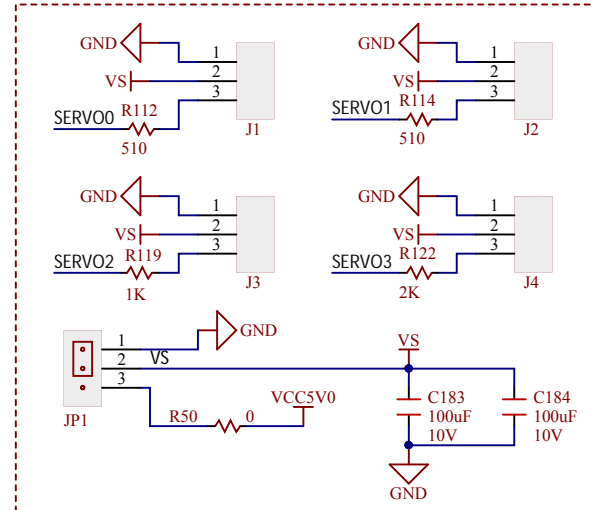
Title BlackBoard		
Description: PL Peripherals		
Author: GTM	Number: 100000	Revision: D
Date: 11/22/2018	Time: 8:07:49 PM	Page 8 of 12



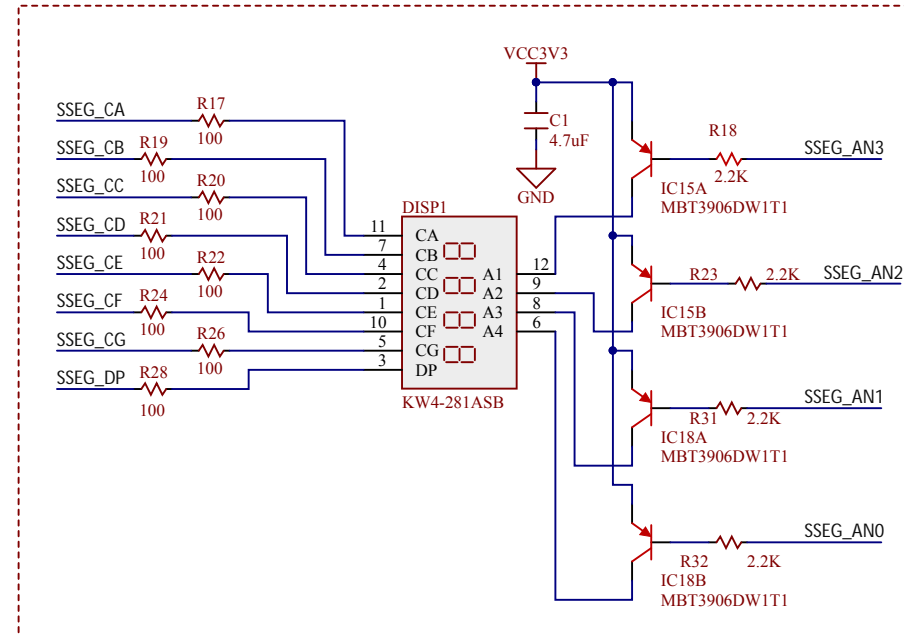
PMOD CONNECTORS

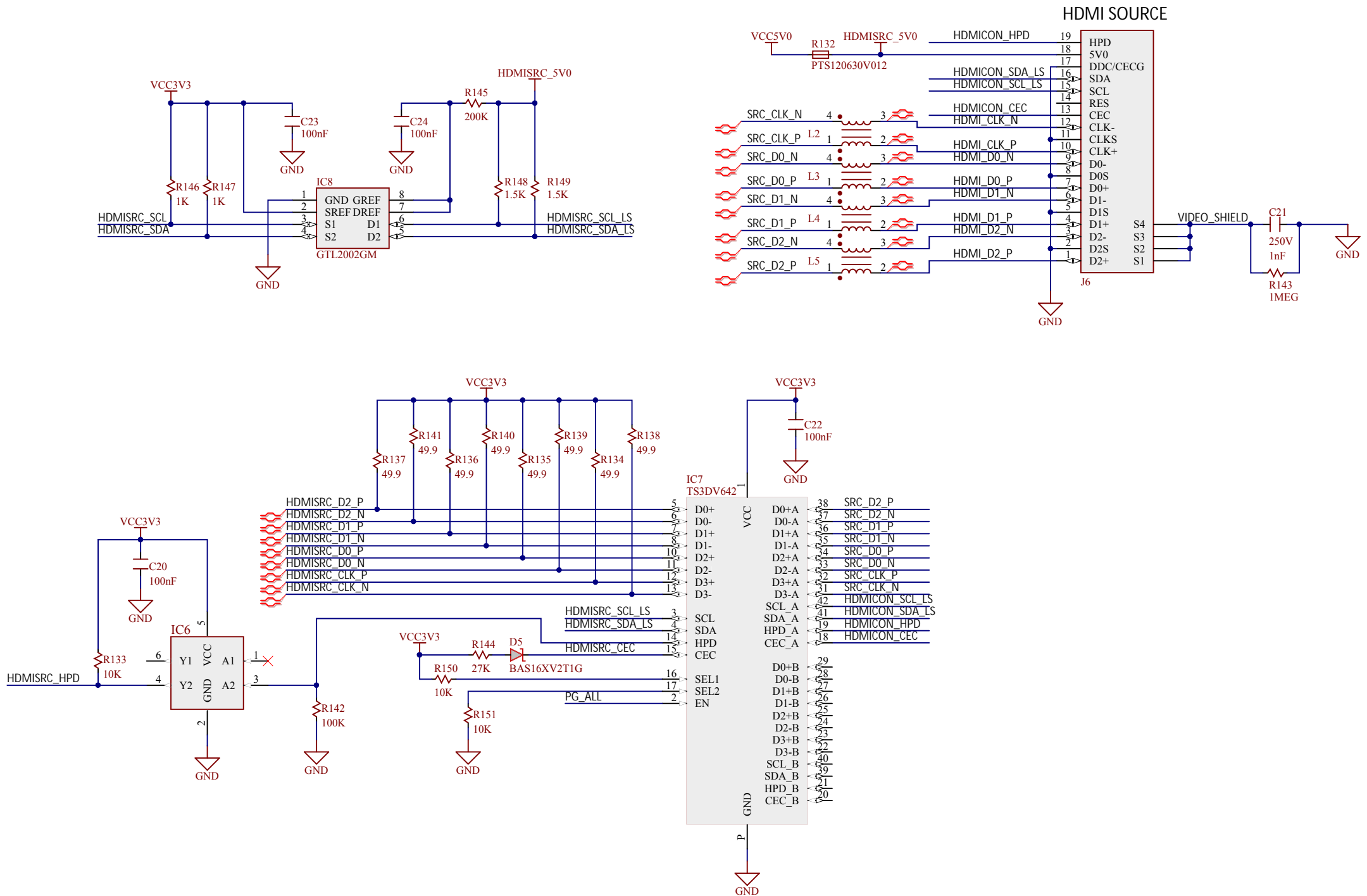


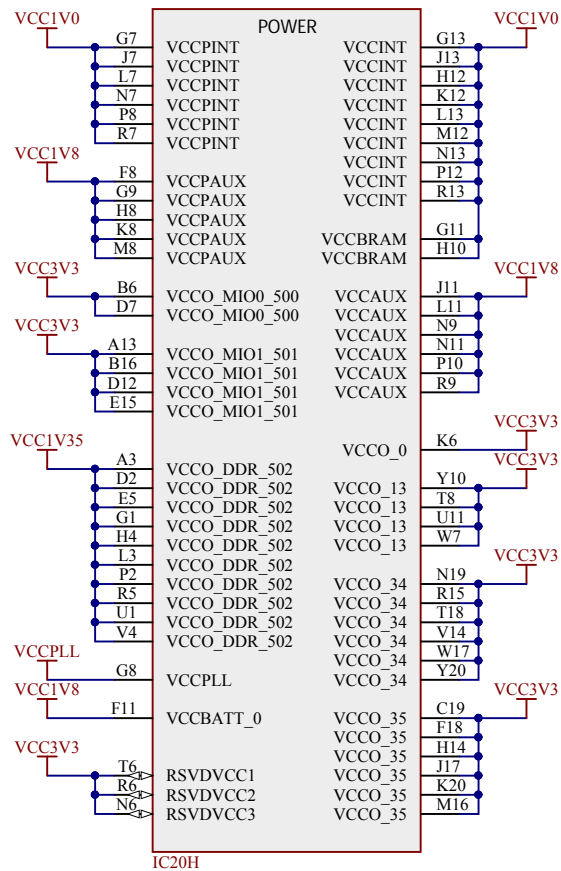
SERVO MOTOR CONNECTORS



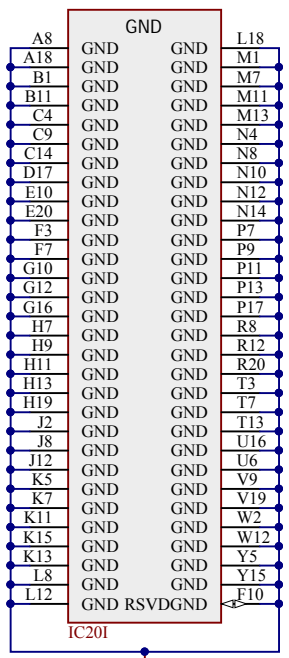
SSEG DISPLAY







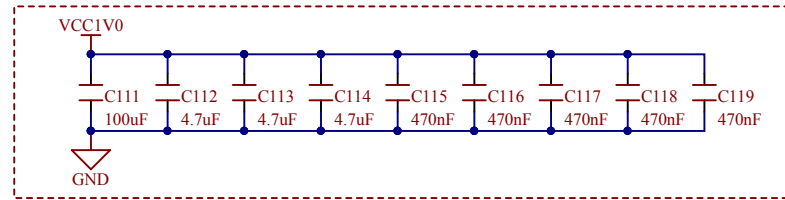
IC20H



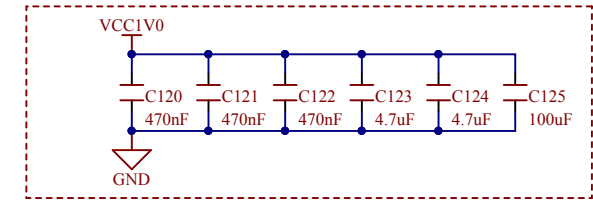
IC201



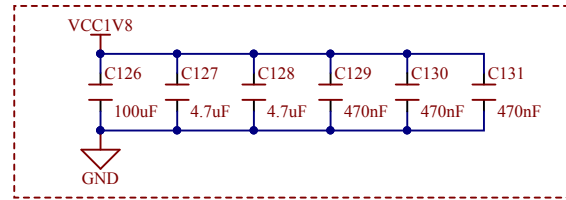
VCCPINT



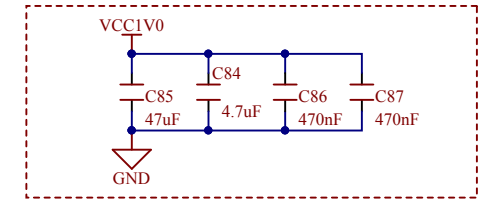
VCCINT



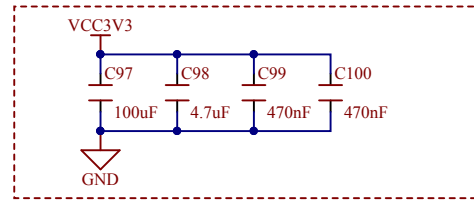
VCCPAUX



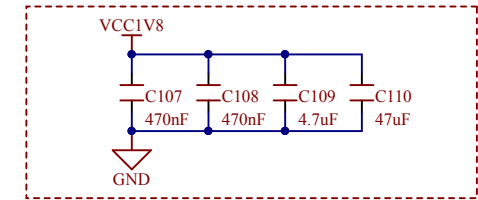
VCCBRAM



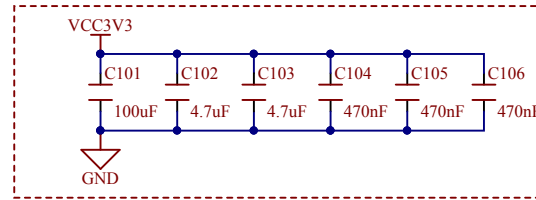
VCCO_MIO0_500



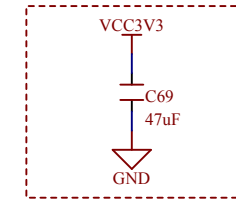
VCCAUX



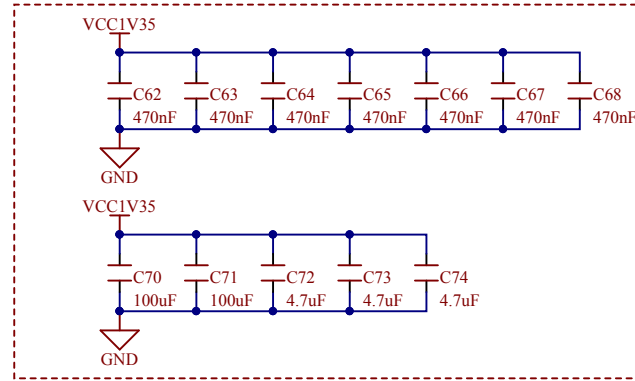
VCCO_MIO1_501



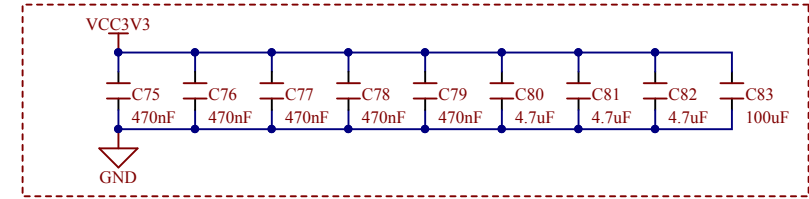
VCCO_0



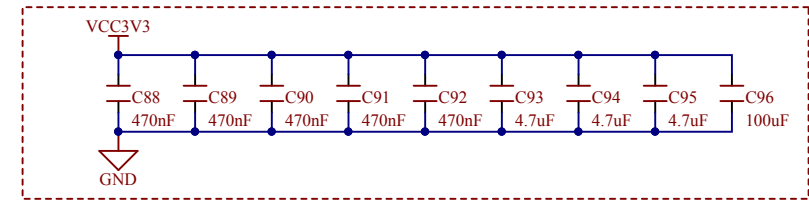
VCCO_DDR_502



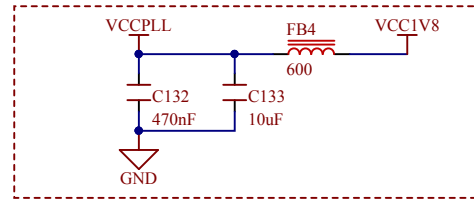
VCCO_34



VCCO_35

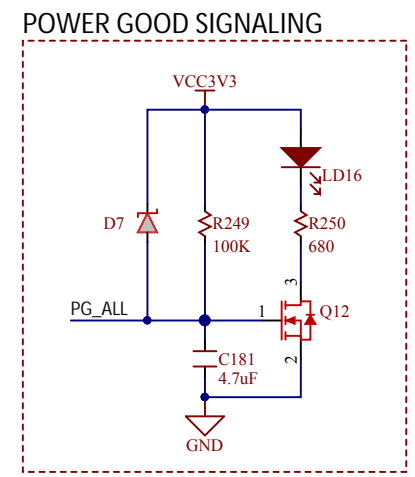
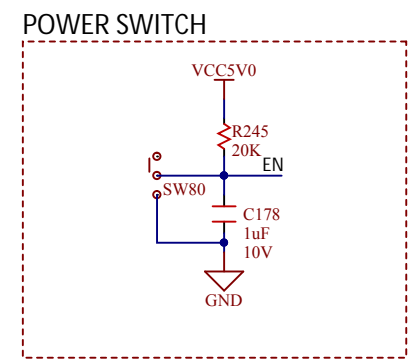
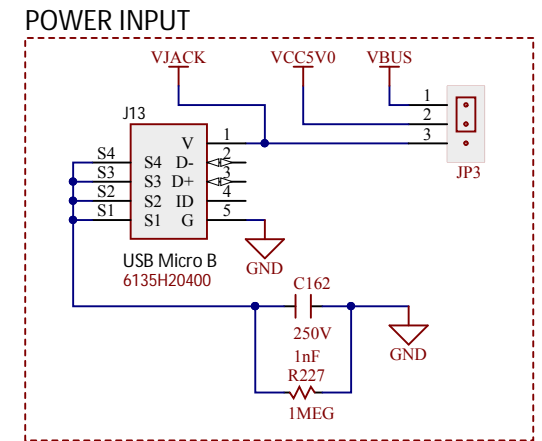
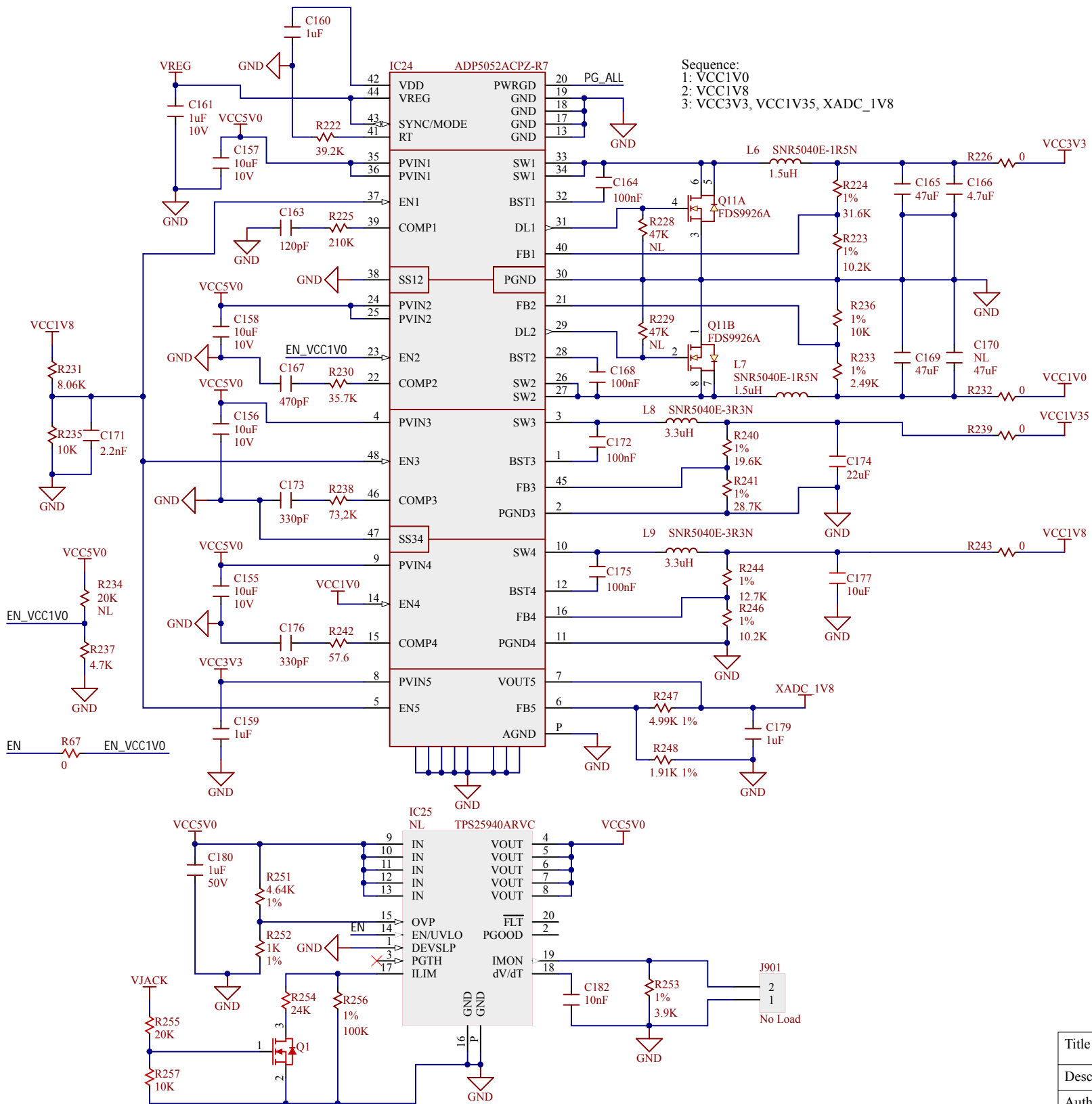


VCCPLL



Title BlackBoard		
Description: ZYNQ Power		
Author: GTM	Number: 100000	Revision: D
Date: 11/22/2018	Time: 8:07:52 PM	Page 11 of 12





Title BlackBoard			
Description: Power Regulation			
Author: GTM	Number: 100000	Revision: D	
Date: 11/22/2018	Time: 8:07:53 PM	Page 12 of 12	